

# Mangrove Colonization Patterns and Rates along the Coastal Everglades

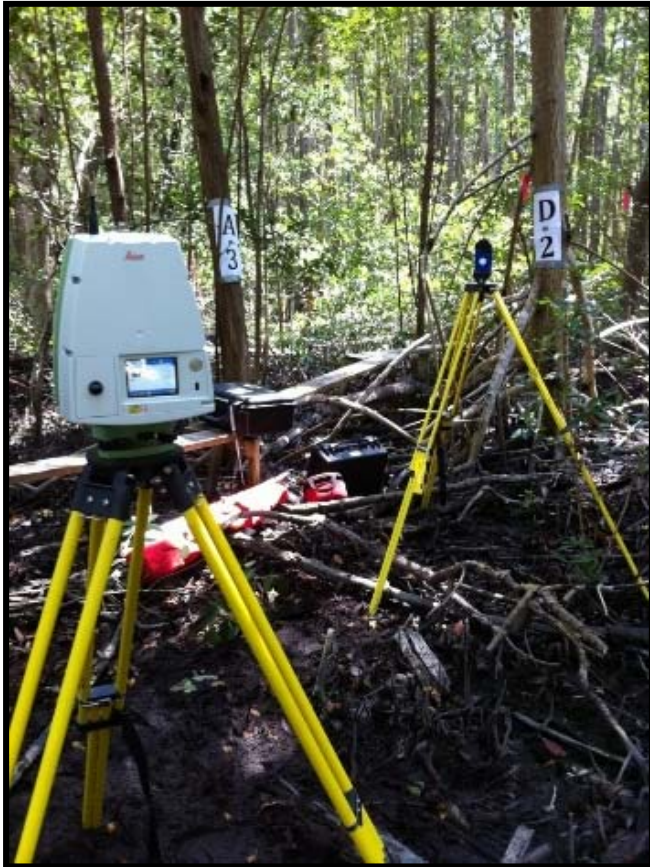
*Shimon Wdowinski<sup>1</sup>, Amanda Brioche, Emanuelle Feliciano,  
Sang-Hoon Hong<sup>1,2</sup>*

1. University of Miami
2. Korea Polar Research Institute



# Above ground Biomass (AGB) of mangroves using remote sensing technologies

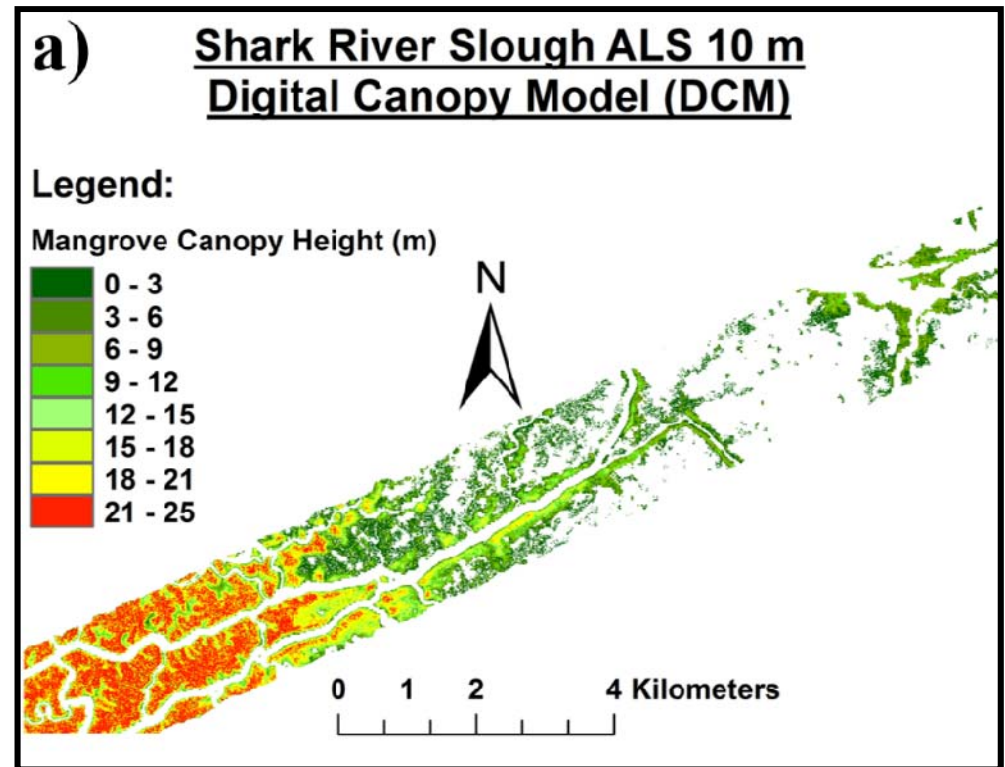
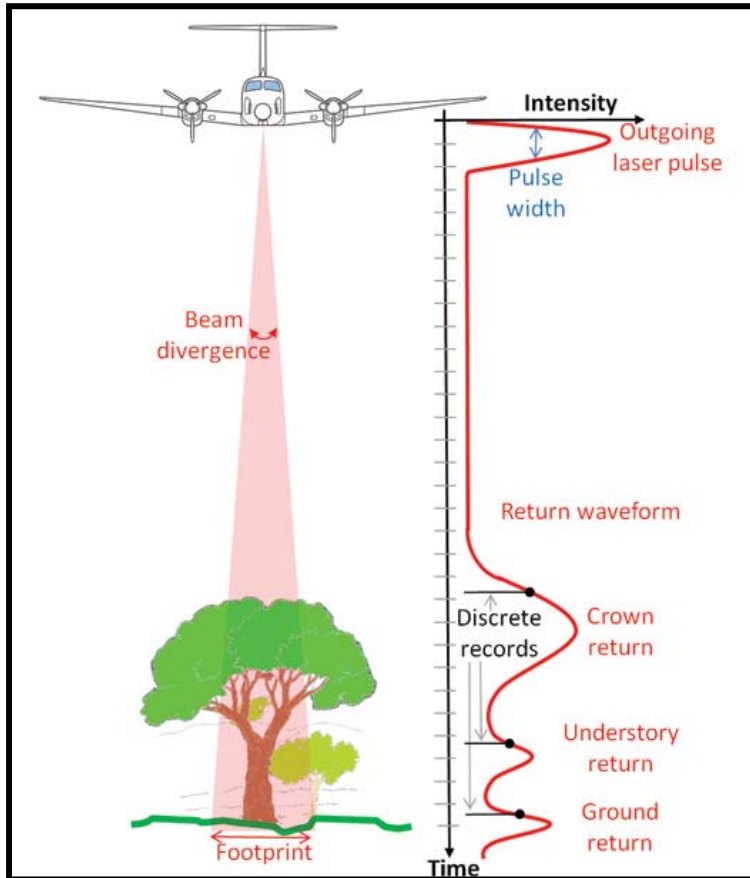
## Terrestrial Laser Scanner (TLS)





# Above ground Biomass (AGB) of mangroves using remote sensing technologies

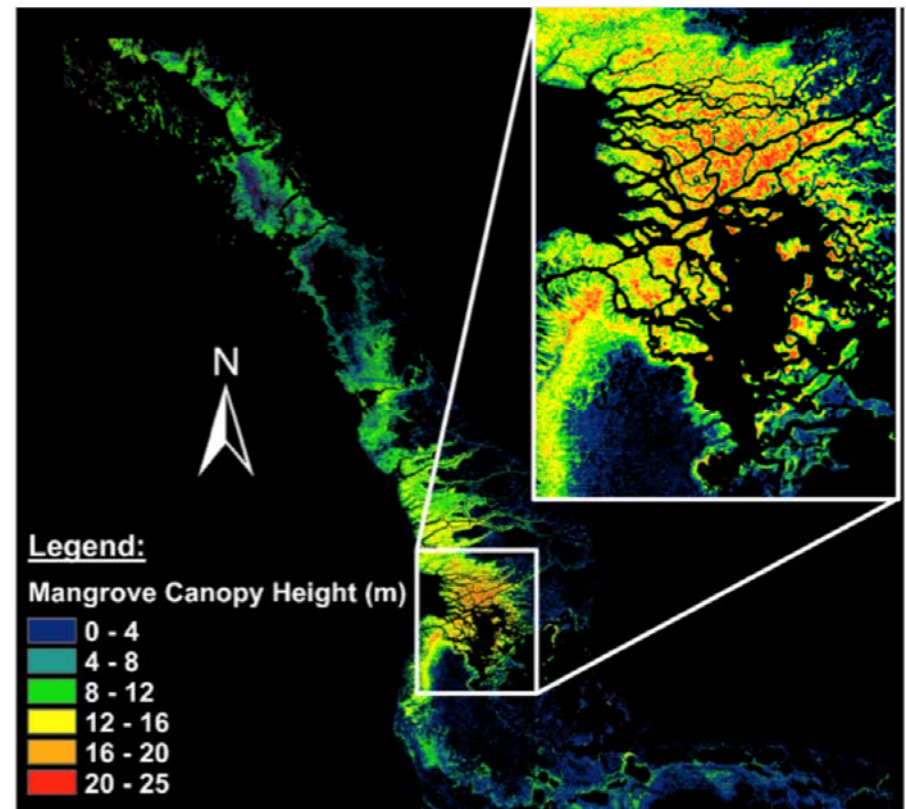
## Air-borne Lidar



# Above ground Biomass (AGB) of mangroves using remote sensing technologies



Space-borne SAR interferometry  
TanDEM-X satellite system

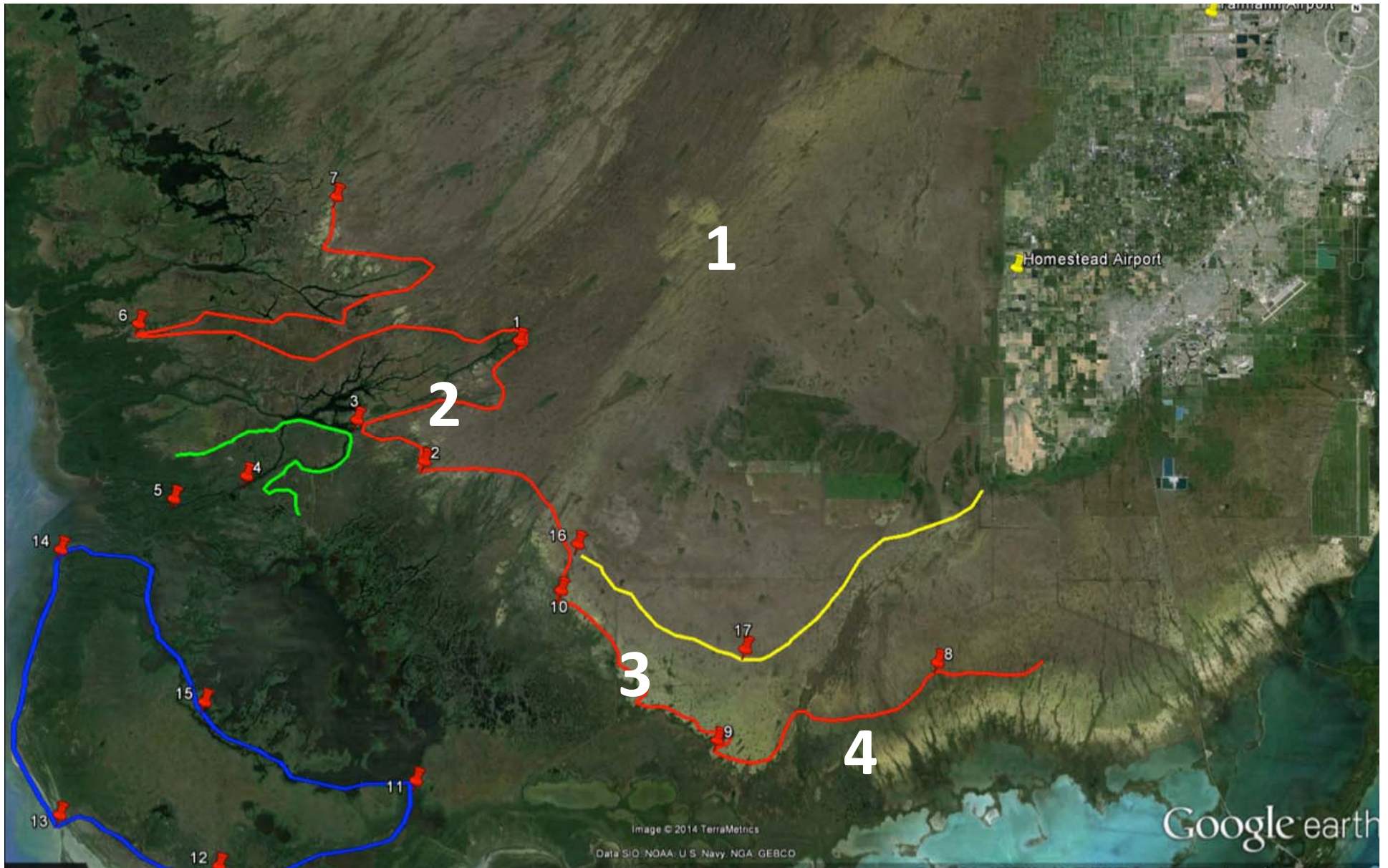


# Ground truthing by a helicopter survey





# Helicopter survey







# Fingering colonization pattern





# Fingering colonization pattern



# Continuous colonization pattern





# Continuous colonization pattern



# Sporadic colonization pattern

## The “White” zone



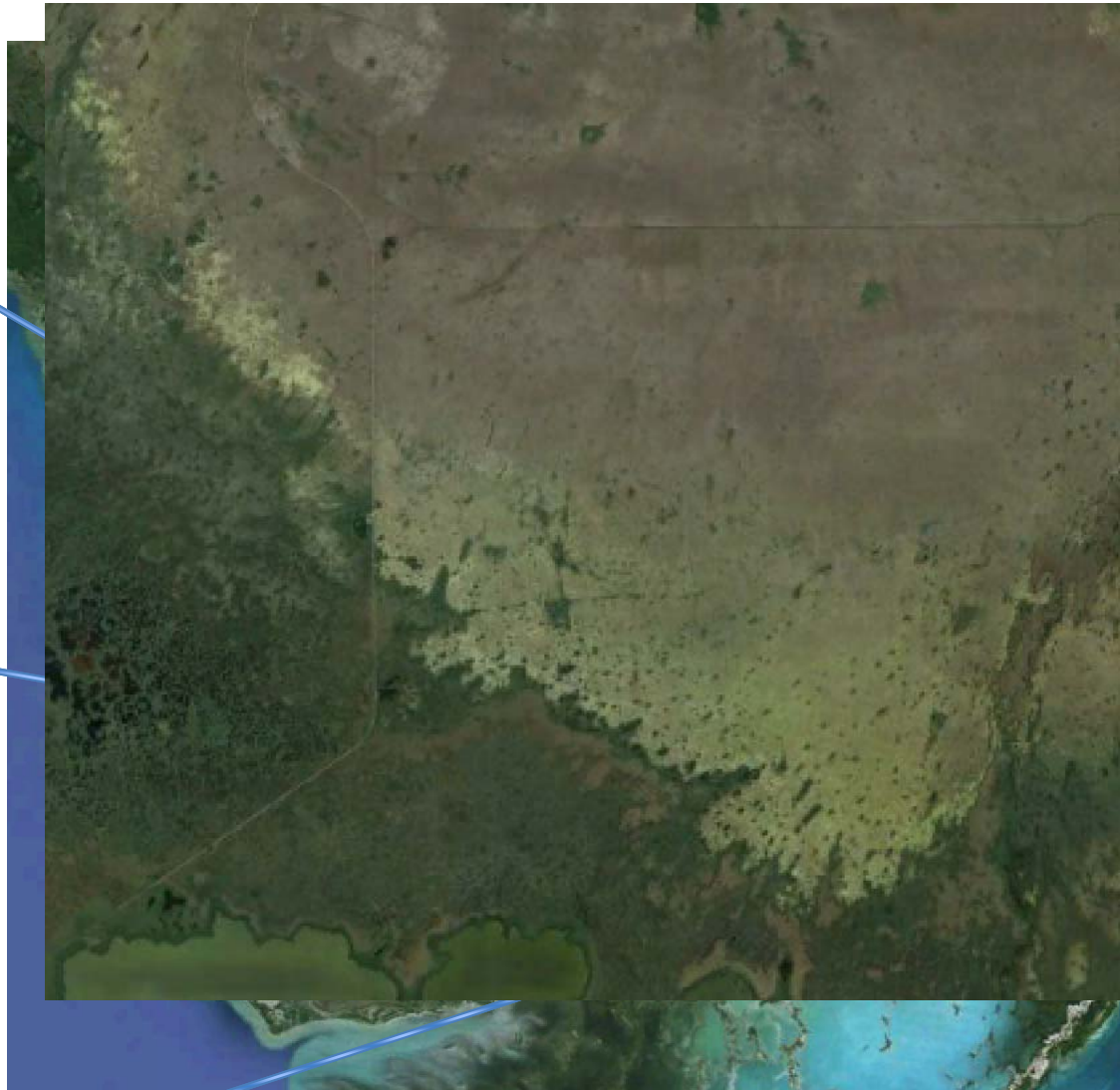


# Sporadic colonization pattern

## The “White” zone



# Mangrove Colonization Patterns

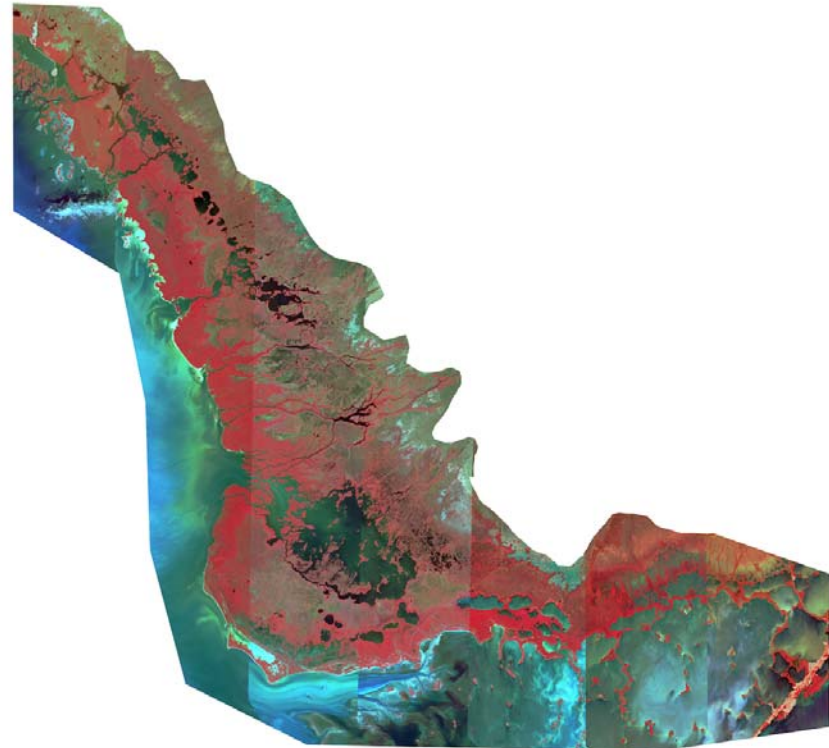
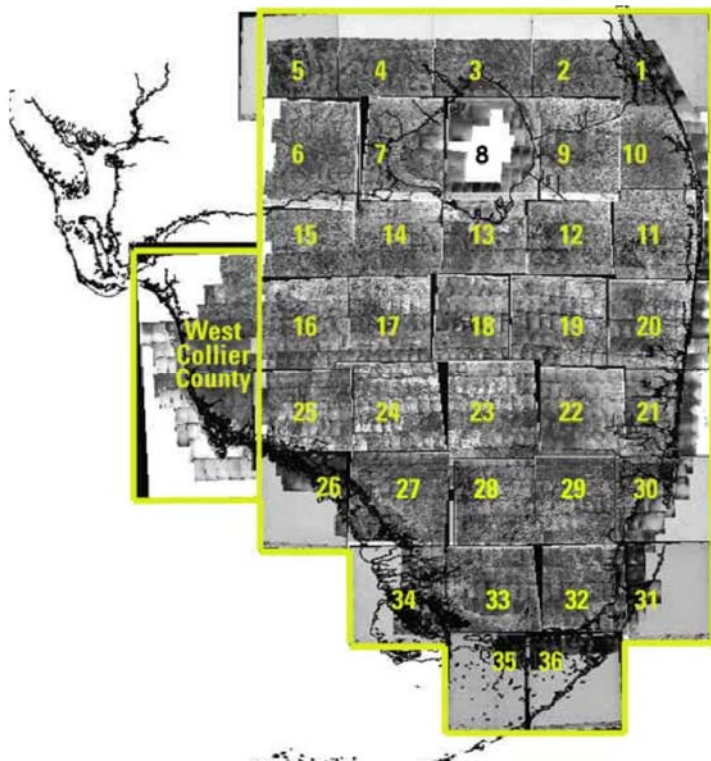




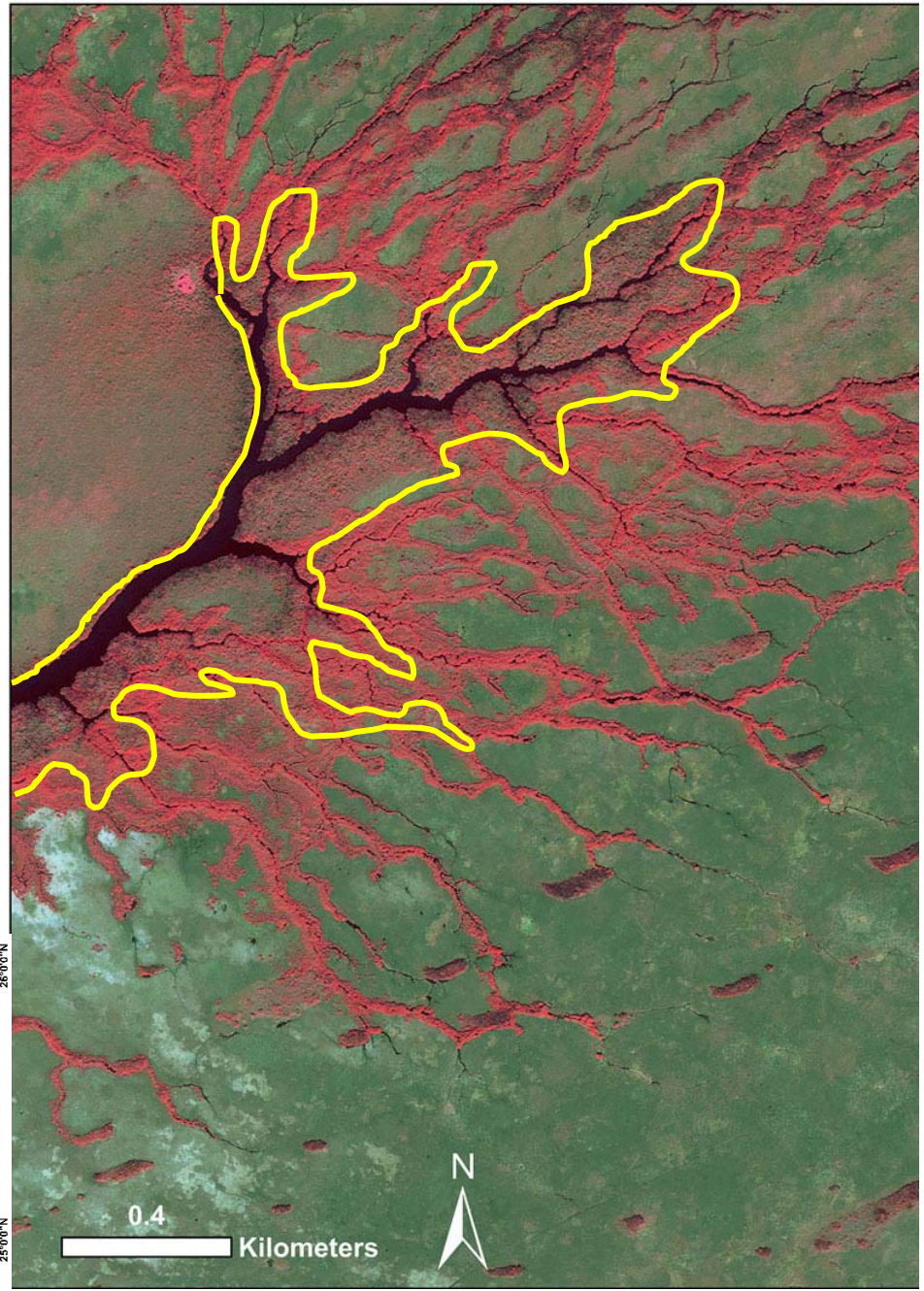
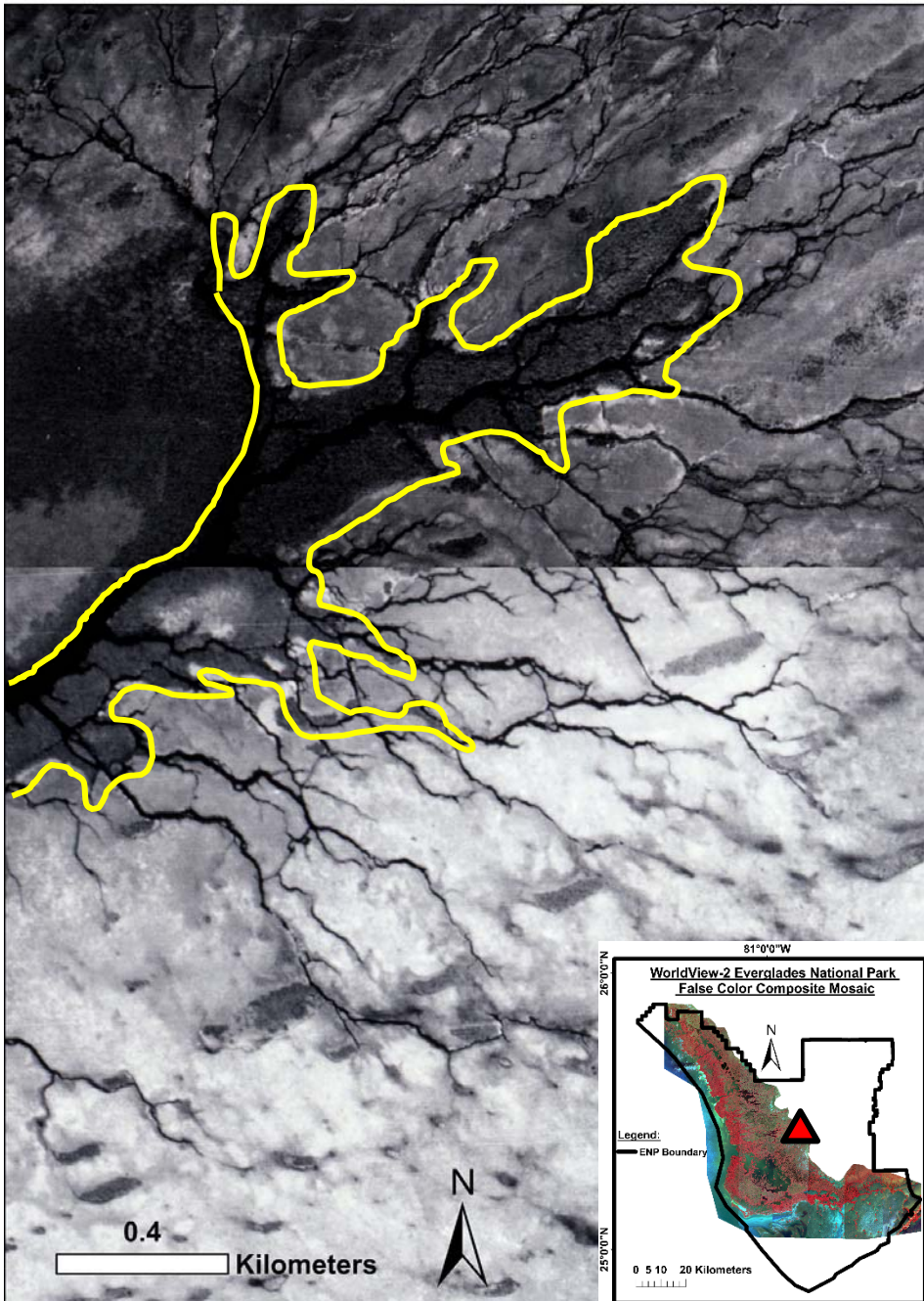
# Estimating colonization rate

## Remote sensing analysis: Comparison between

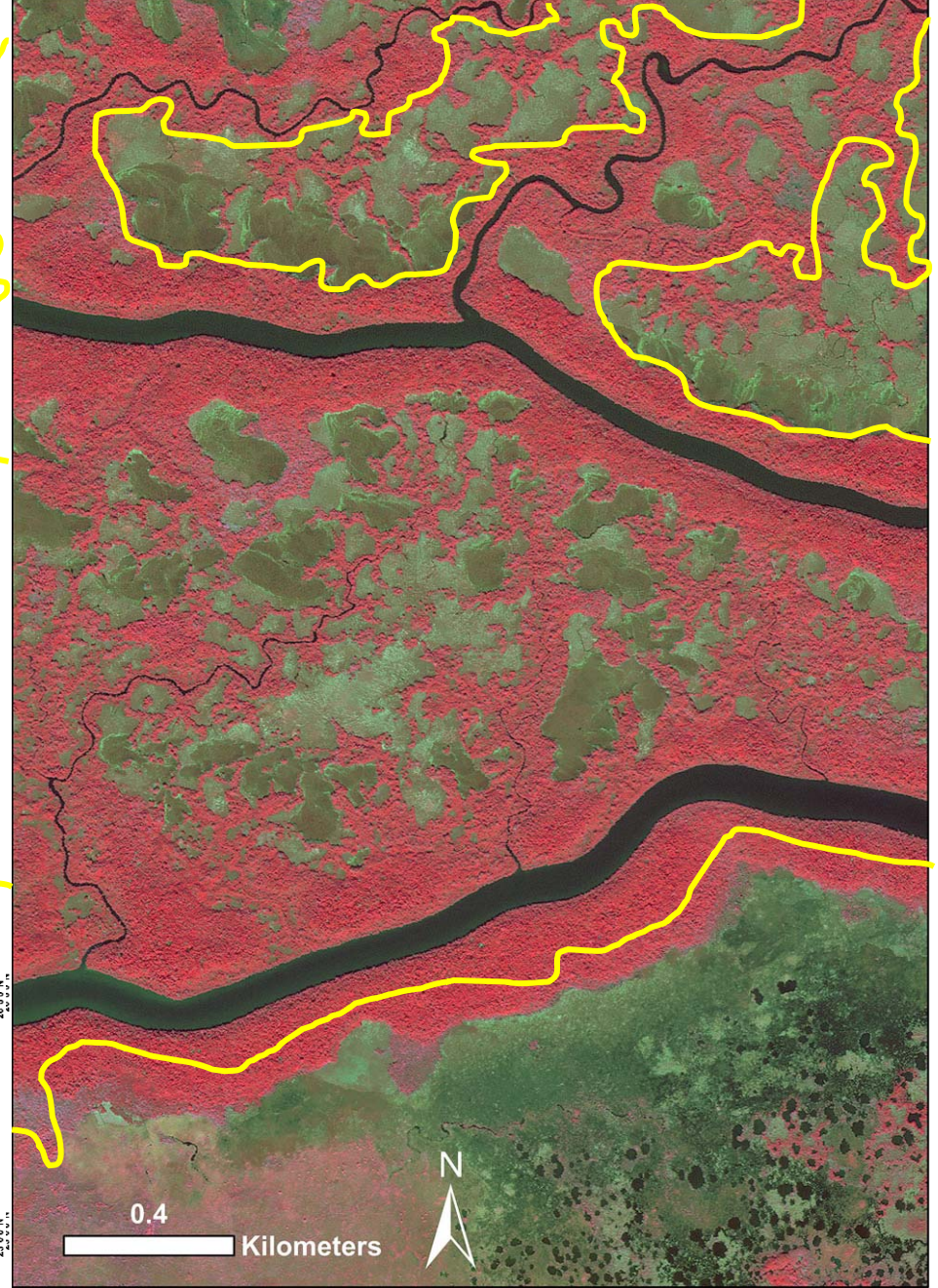
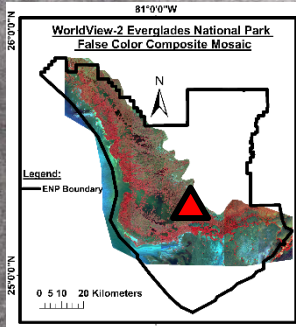
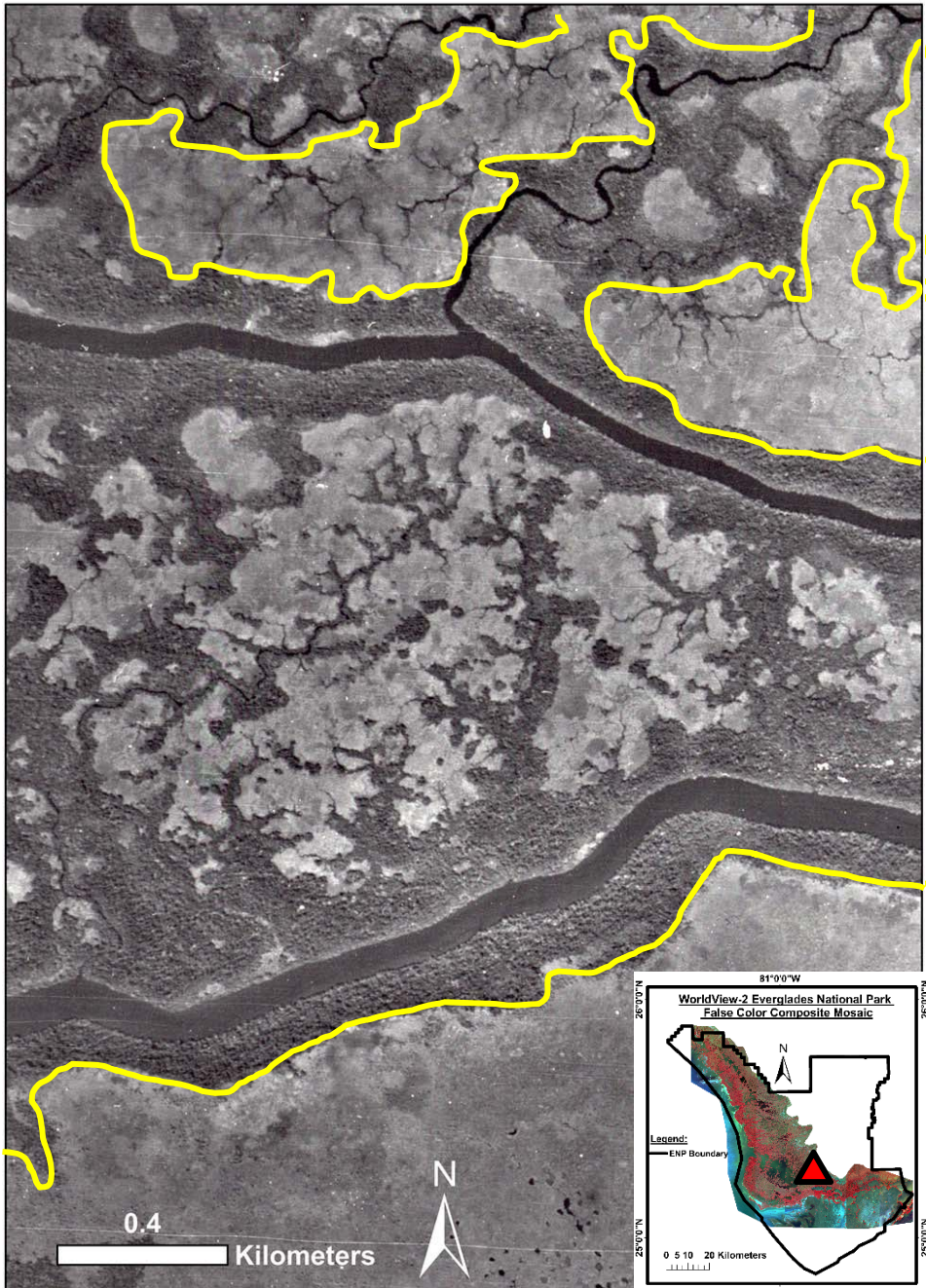
- 1940 Greater Everglades and South Florida Aerial Photoset (<http://sofia.usgs.gov/exchange/aerial-photos/>) - 2 m pixel resolution.
- 2015 WorldView-2 satellite imagery - 1.85 m pixel resolution. False color composite (bands - 7,5,3)



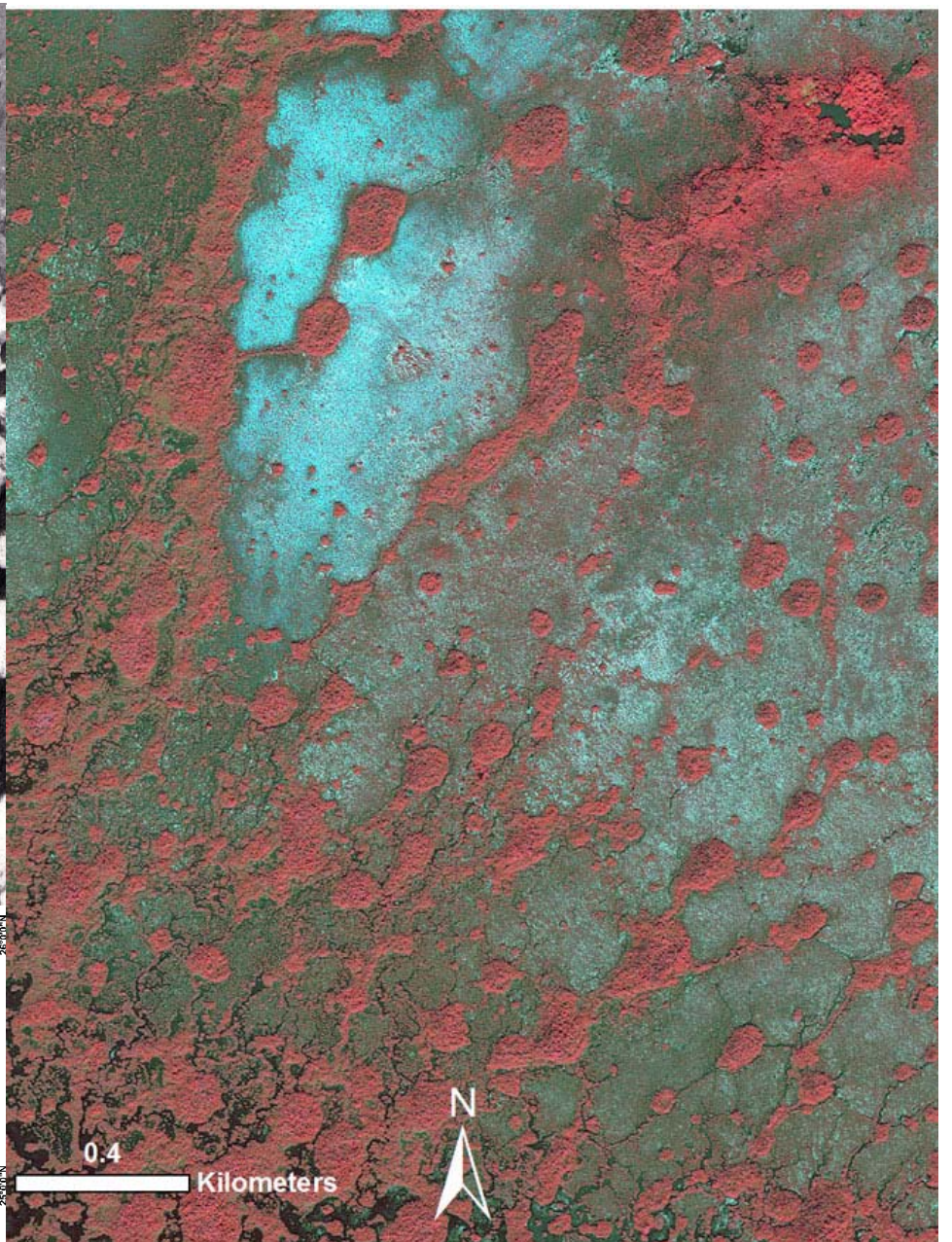
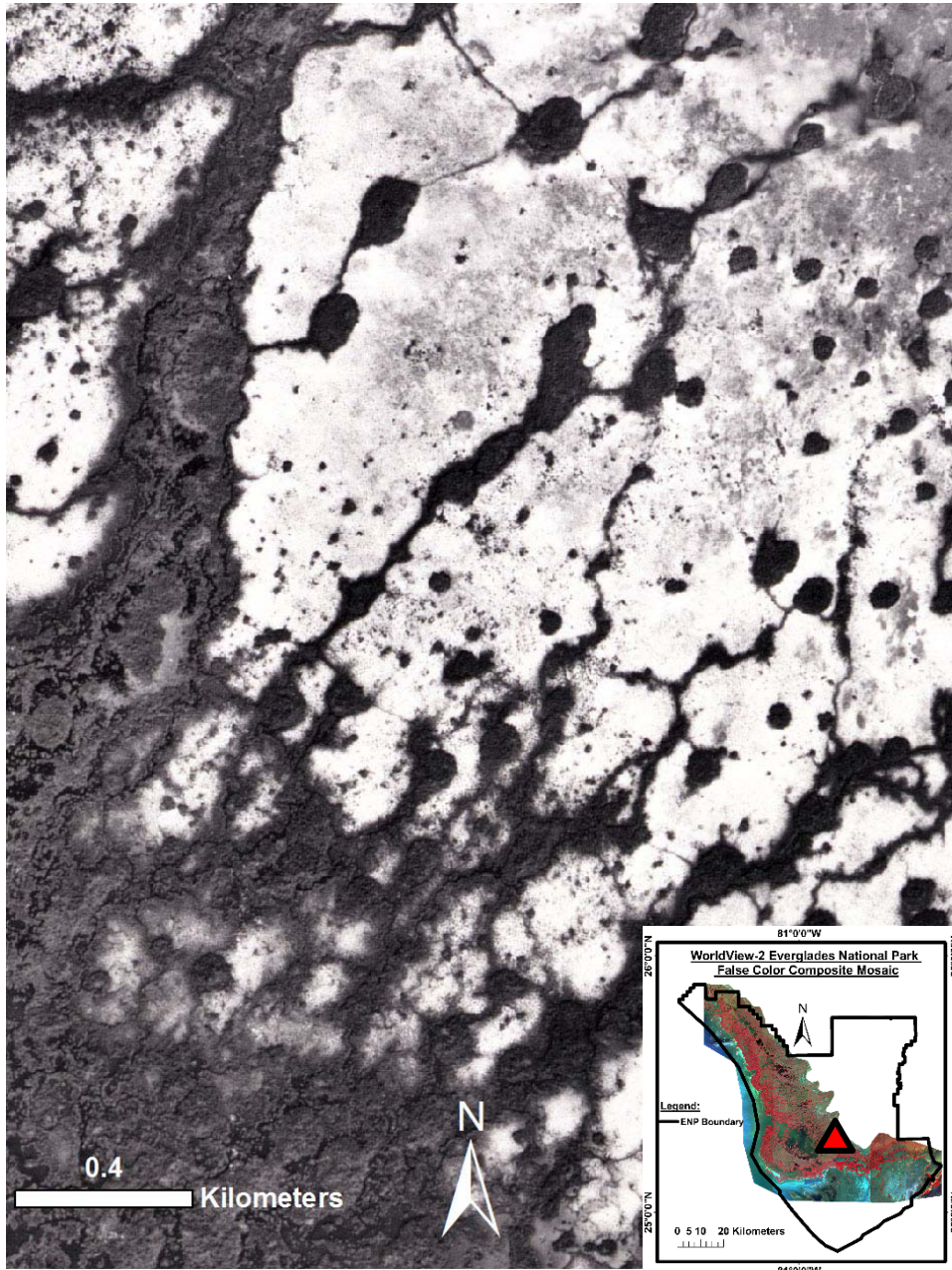




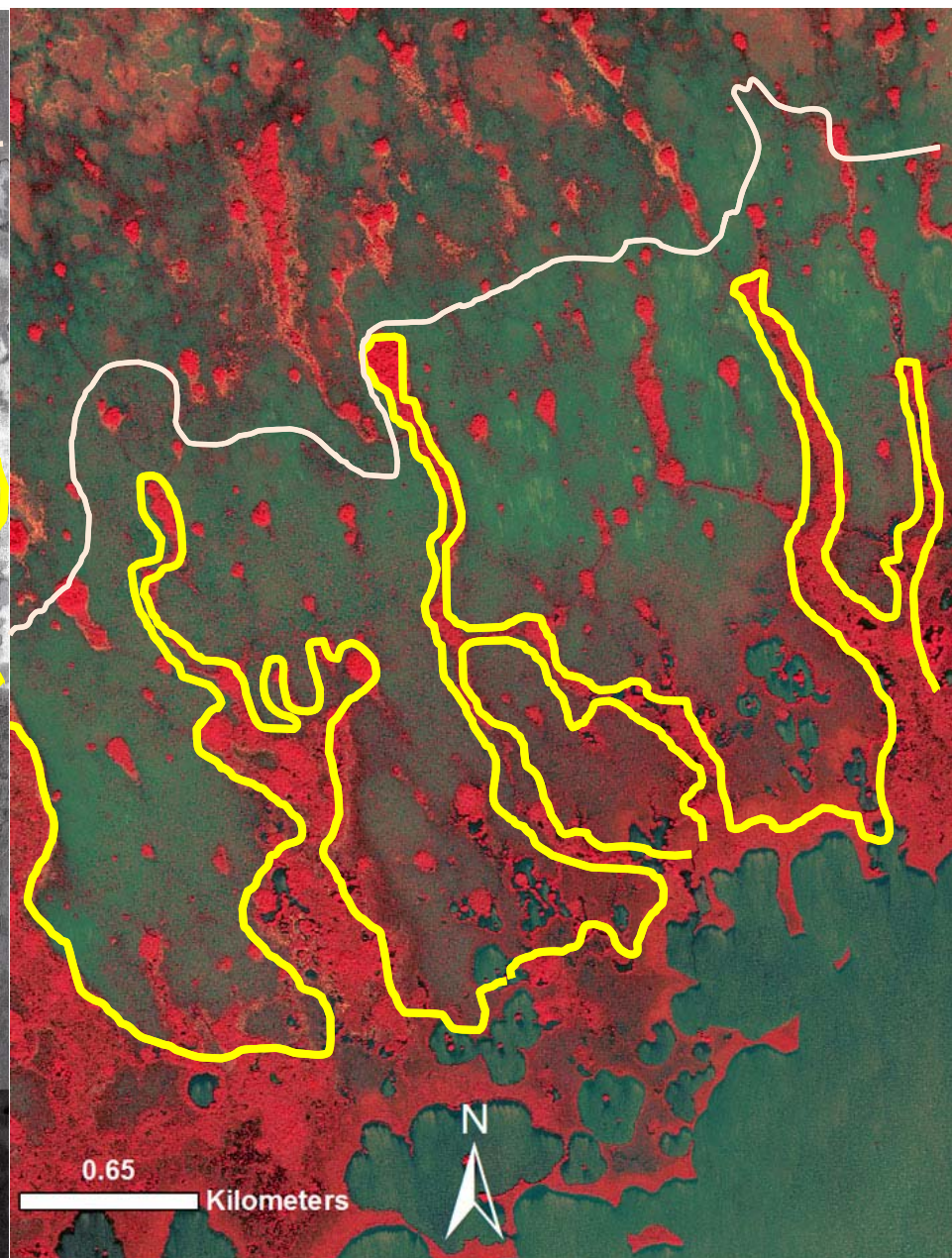
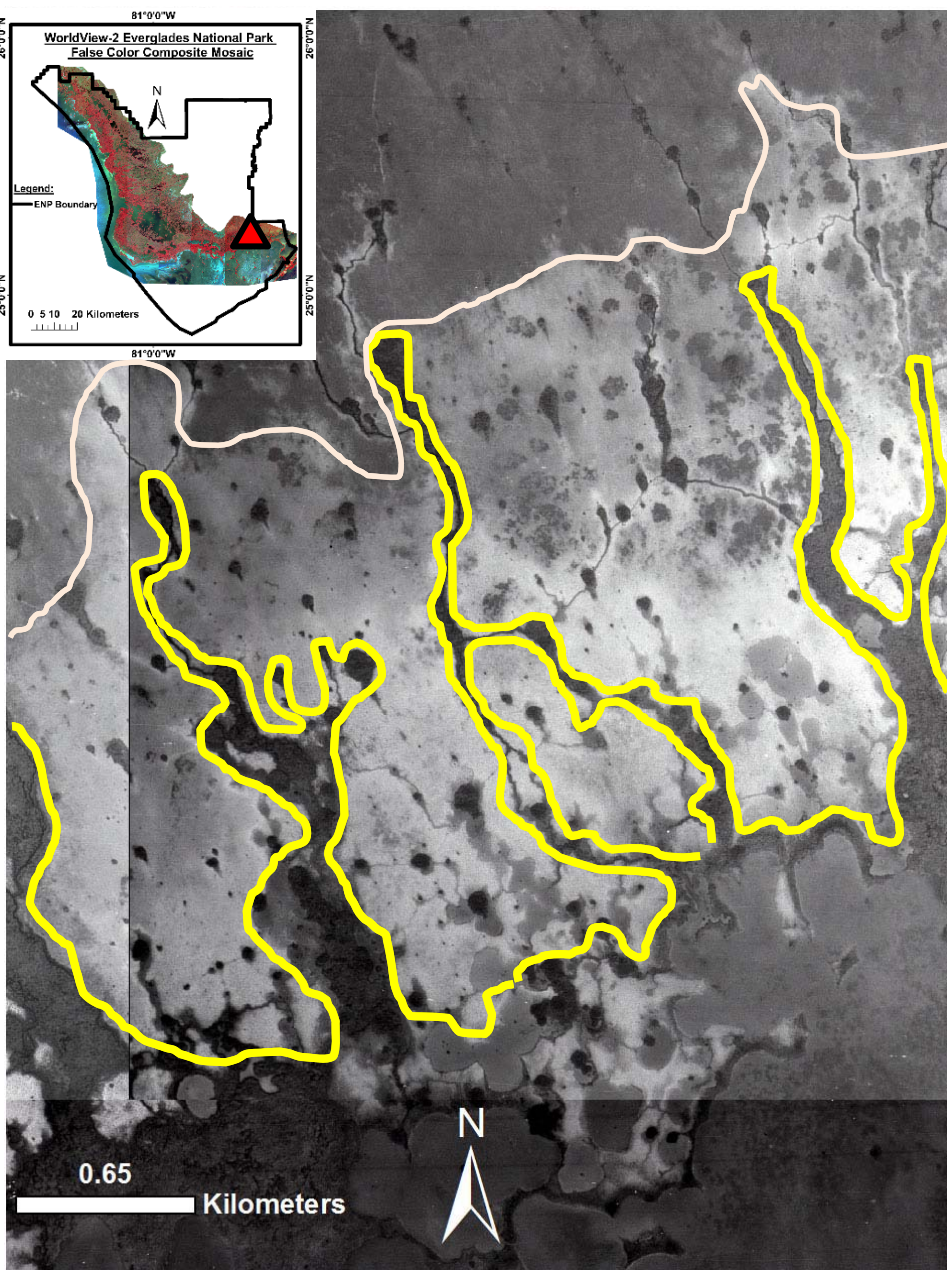
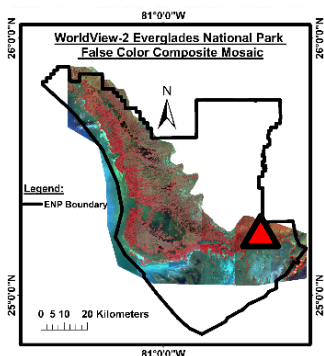












# Summary

- **We identified three colonization patterns**
  - **Fingering**
  - **Continuous**
  - **Sporadic (“white” zone)**
- **The different patterns reflect the combined effect of:**
  - **Topography**
  - **Tidal channel propagation**
  - **Freshwater supply**
- **Colonization rate is estimated by comparing 1940 areal photoset with 2015 WorldView-2 imagery**
  - **Preliminary results indicate a maximum of 1.4 km of eastward expansion (1400 m/ 75 yrs ~ 20 m/yr).**



# Acknowledgements

## Data

- Digital Globe Foundation - WorldView-2 Satellite Imagery
- SOFIA (USGS) – 1940 areal photoset

## Support

- NASA
- NSF